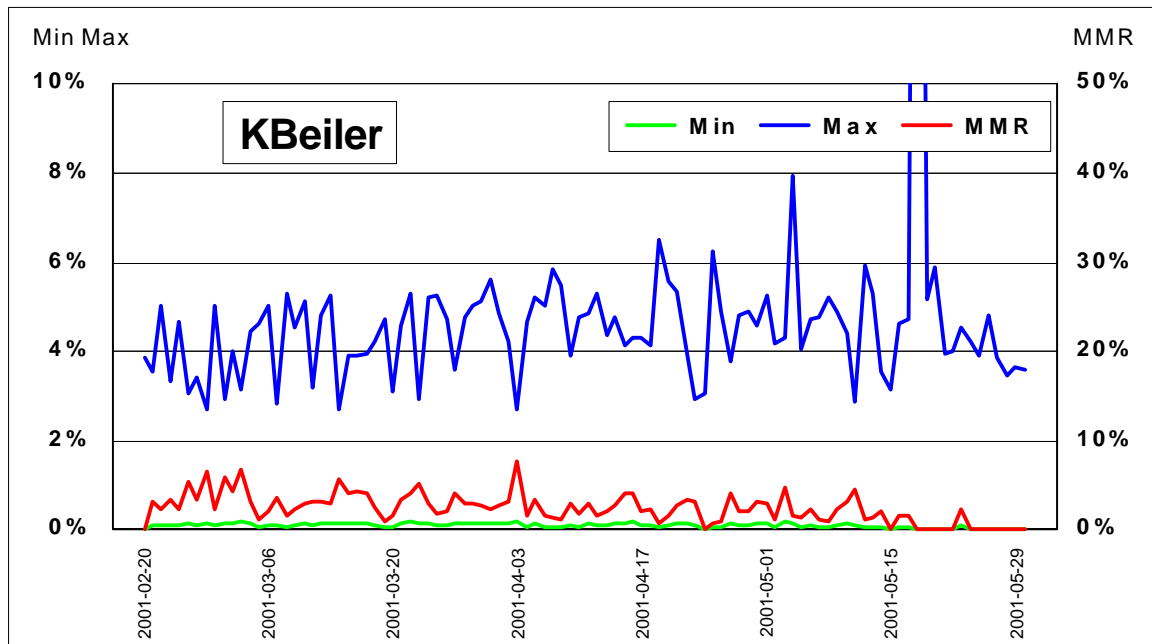
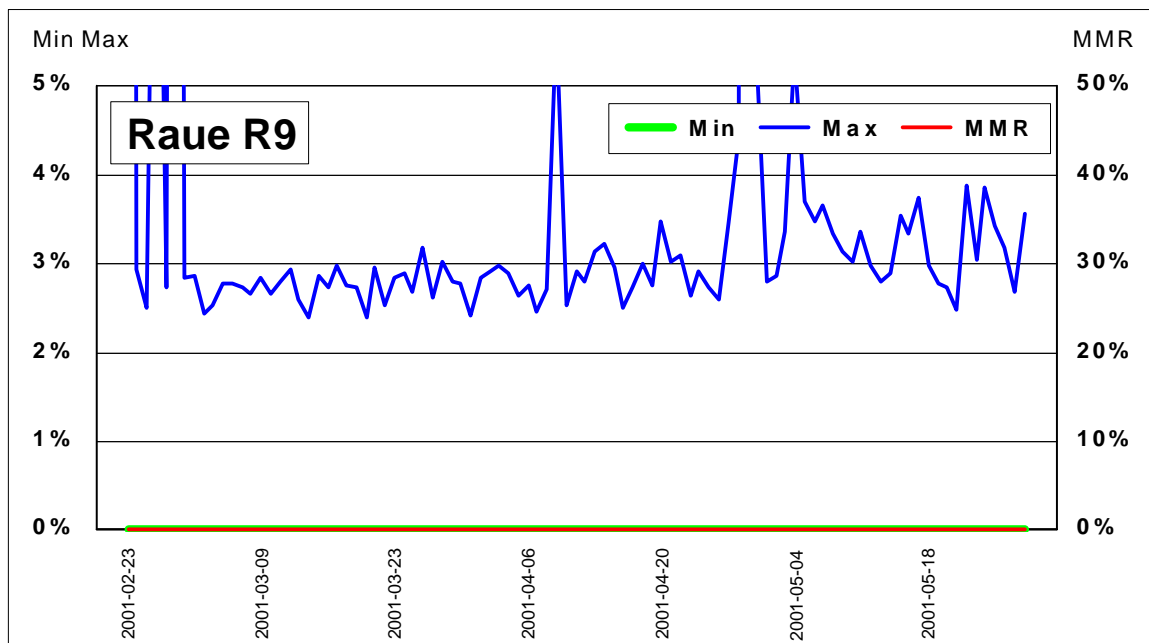


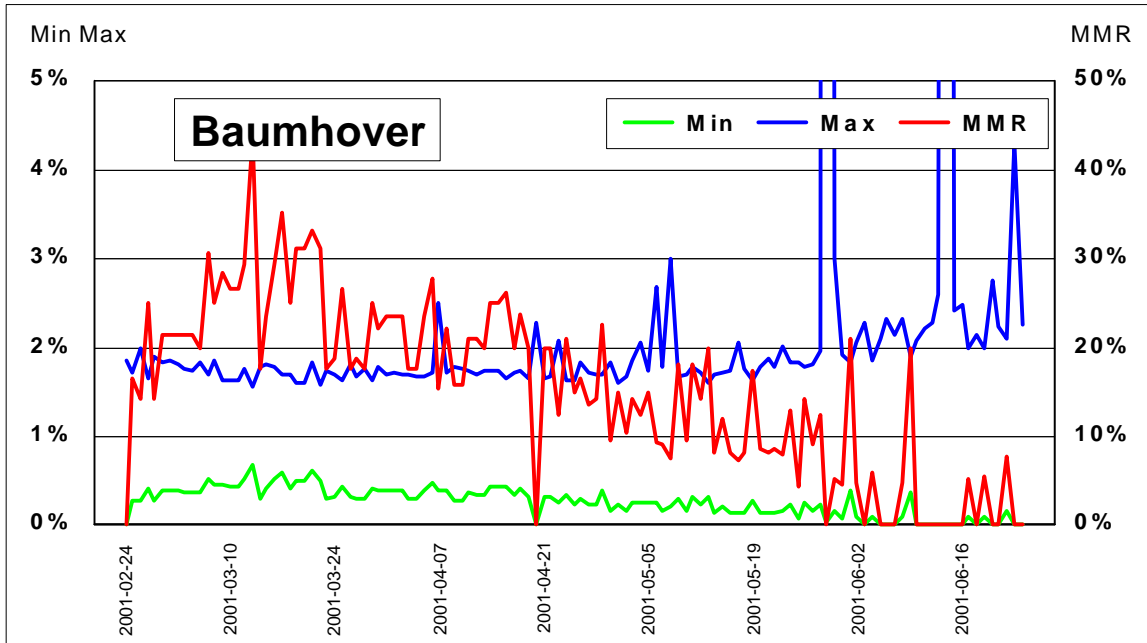
WMMR Examples



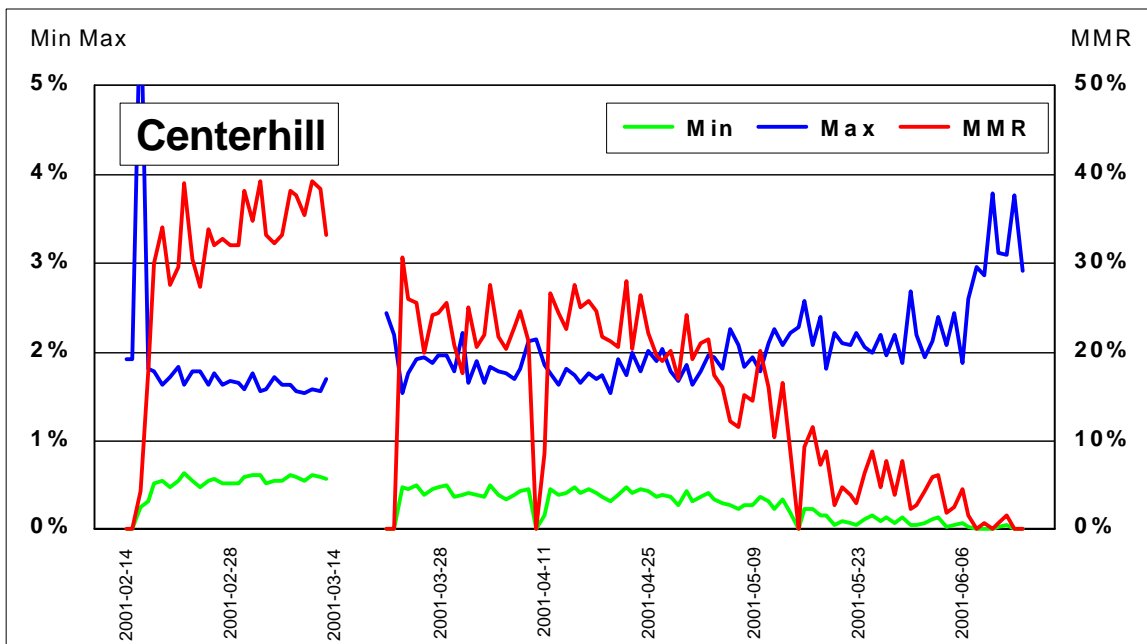
This is probably OK to generally good. Min is fairly low, and Max is high.
MMR jerks around a little, maybe some leakage.
Max is around 4% and drifts upward a little. High peak near the end probably a data error.



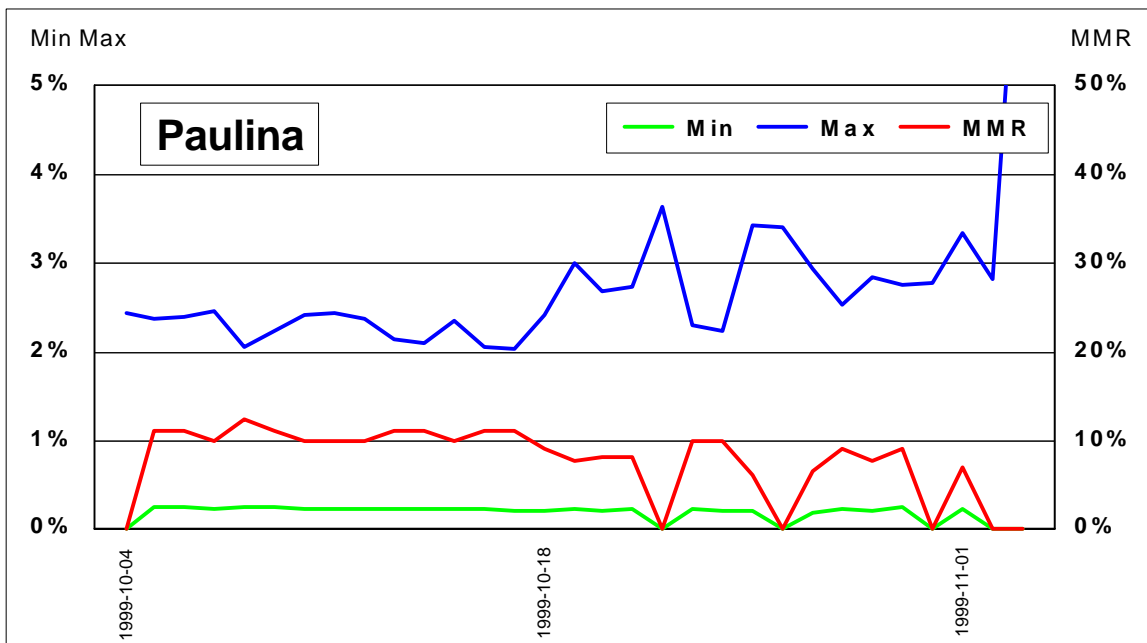
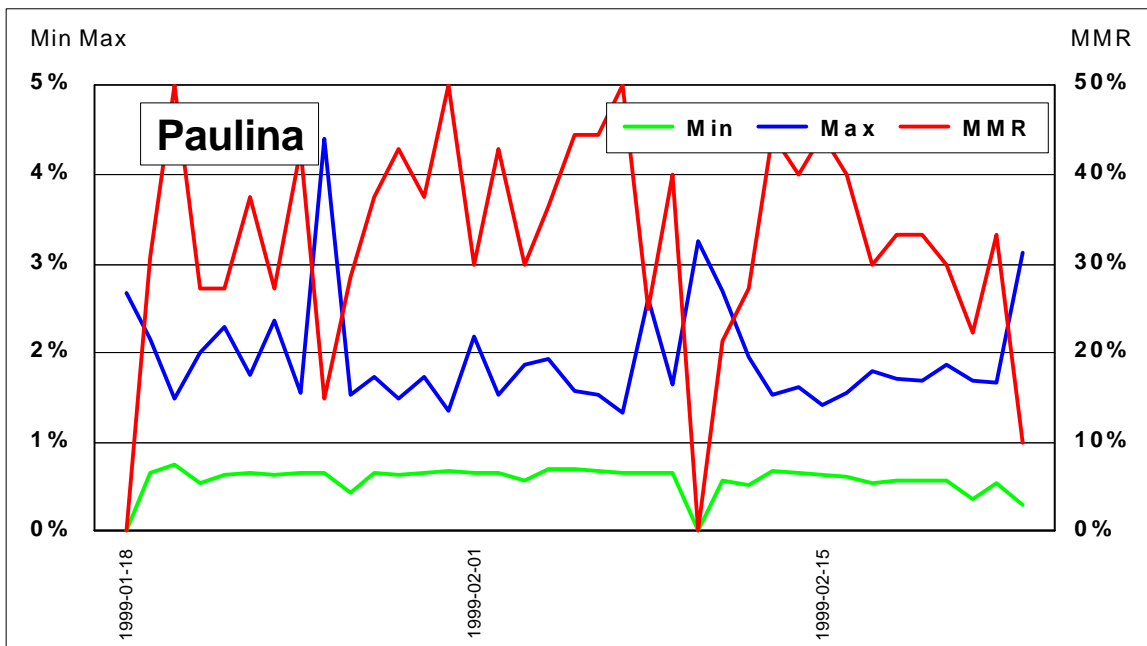
Min zero is a good sign. Max is not so high as the first, but reasonably consistent and drifts upwards.



Really doesn't look all that brilliant. Max is low, Min is high and so MMR is really high.
 Ok, some data probable data errors towards the end.
 But it's drifting strongly - min is steadily coming down and max goes up towards the end.



Pretty similar, and in much the same way. (1 week gap in the data 1/3rd the way in.)
 Right at the end, it changes completely to a more normal trace.
 We've got some real unhappy pigs, or serious competition.



Site with known and persistent problems. Upper chart is "before" - max way down, min way up so high MMR. (Total volume was also low.) Water found to be alkaline. Lower chart shows it after pH correction. Max is higher than before, and drifting upwards.